

PINE LAKE

A PARCEL OF LAND LYING IN THE NORTHEAST ONE-QUARTER, OF SECTION 10, TOWNSHIP 44 SOUTH, RANGE 42 EAST, AND A REPLAT OF TRACT M ACCORDING TO THE PLAT OF PARKSIDE GREEN AS RECORDED IN PLAT BOOK 49, PAGE 122, PUBLIC RECORDS OF PALM BEACH COUNTY, FLORIDA.

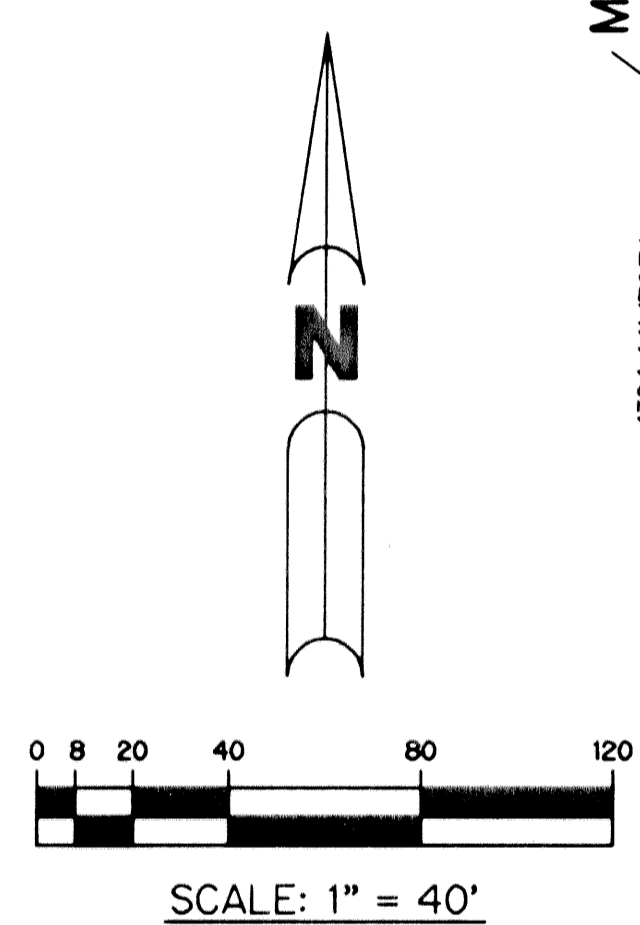
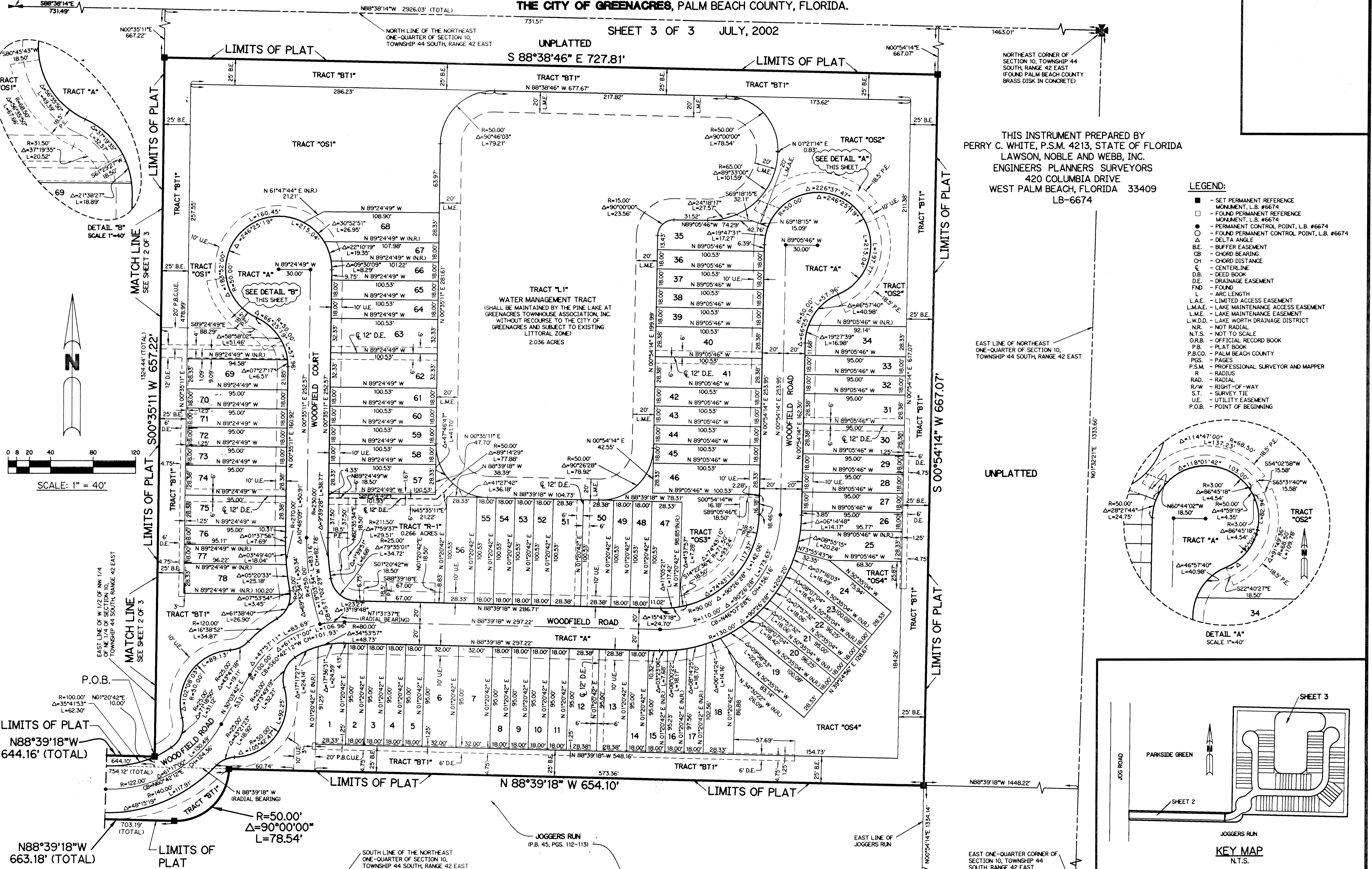
THE CITY OF GREENACRES, PALM BEACH COUNTY, FLORIDA.

SHEET 3 OF 3 JULY, 2002

UNPLATTED
S 88°38'46" E 727.81'

P.O.C.
NORTH ONE-QUARTER CORNER OF SECTION 10, TOWNSHIP 44 SOUTH, RANGE 42 EAST
FND P.B. CO. DISC IN CONCRETE

NORTHEAST CORNER OF SECTION 10, TOWNSHIP 44 SOUTH, RANGE 42 EAST (FOUND PALM BEACH COUNTY BRASS DISK IN CONCRETE)



THIS INSTRUMENT PREPARED BY
PERRY C. WHITE, P.S.M. 4213, STATE OF FLORIDA
LAWSON, NOBLE AND WEBB, INC.
ENGINEERS PLANNERS SURVEYORS
420 COLUMBIA DRIVE
WEST PALM BEACH, FLORIDA 33409
LB-6674

- LEGEND:**
- - SET PERMANENT REFERENCE MONUMENT, L.B. #6674
 - - FOUND PERMANENT REFERENCE MONUMENT, L.B. #6674
 - - PERMANENT CONTROL POINT, L.B. #6674
 - - FOUND PERMANENT CONTROL POINT, L.B. #6674
 - Δ - DELTA ANGLE
 - B.E. - BUFFER EASEMENT
 - CB - CHORD BEARING
 - CH - CHORD DISTANCE
 - ⊙ - CENTERLINE
 - D.B. - DEED BOOK
 - D.E. - DRAINAGE EASEMENT
 - FND - FOUND
 - L - ARC LENGTH
 - L.A.E. - LIMITED ACCESS EASEMENT
 - L.M.A.E. - LAKE MAINTENANCE ACCESS EASEMENT
 - L.M.E. - LAKE MAINTENANCE EASEMENT
 - L.W.D.D. - LAKE WORTH DRAINAGE DISTRICT
 - N.R. - NOT RADIAL
 - N.T.S. - NOT TO SCALE
 - O.R.B. - OFFICIAL RECORD BOOK
 - P.B. - PLAT BOOK
 - P.B.CO. - PALM BEACH COUNTY
 - PGS. - PAGES
 - P.S.M. - PROFESSIONAL SURVEYOR AND MAPPER
 - R - RADIUS
 - RAD. - RADIAL
 - R/W - RIGHT-OF-WAY
 - S.T. - SURVEY TIE
 - U.E. - UTILITY EASEMENT
 - P.O.B. - POINT OF BEGINNING

